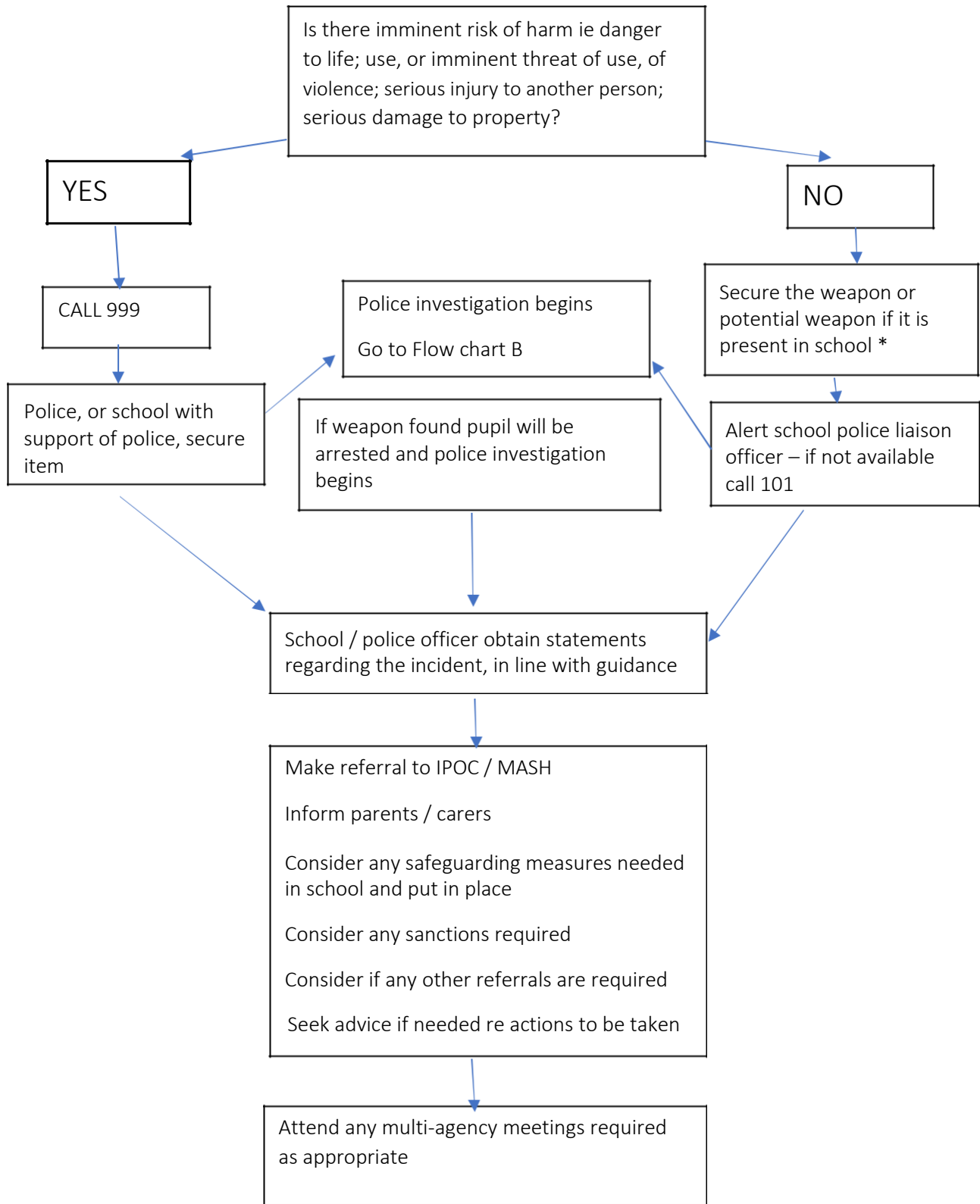
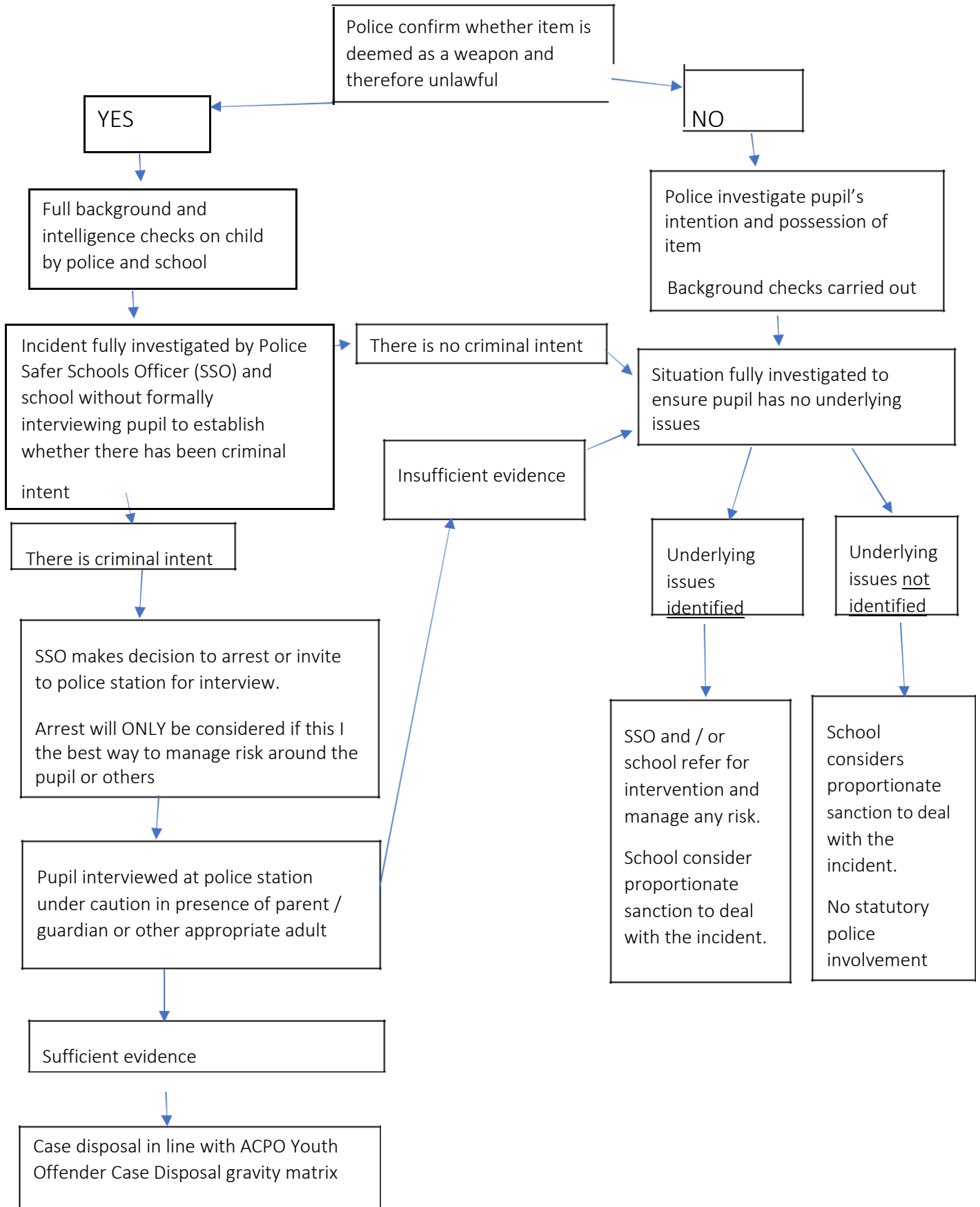


Flow Chart A – pupil has a weapon or is believed to have a weapon

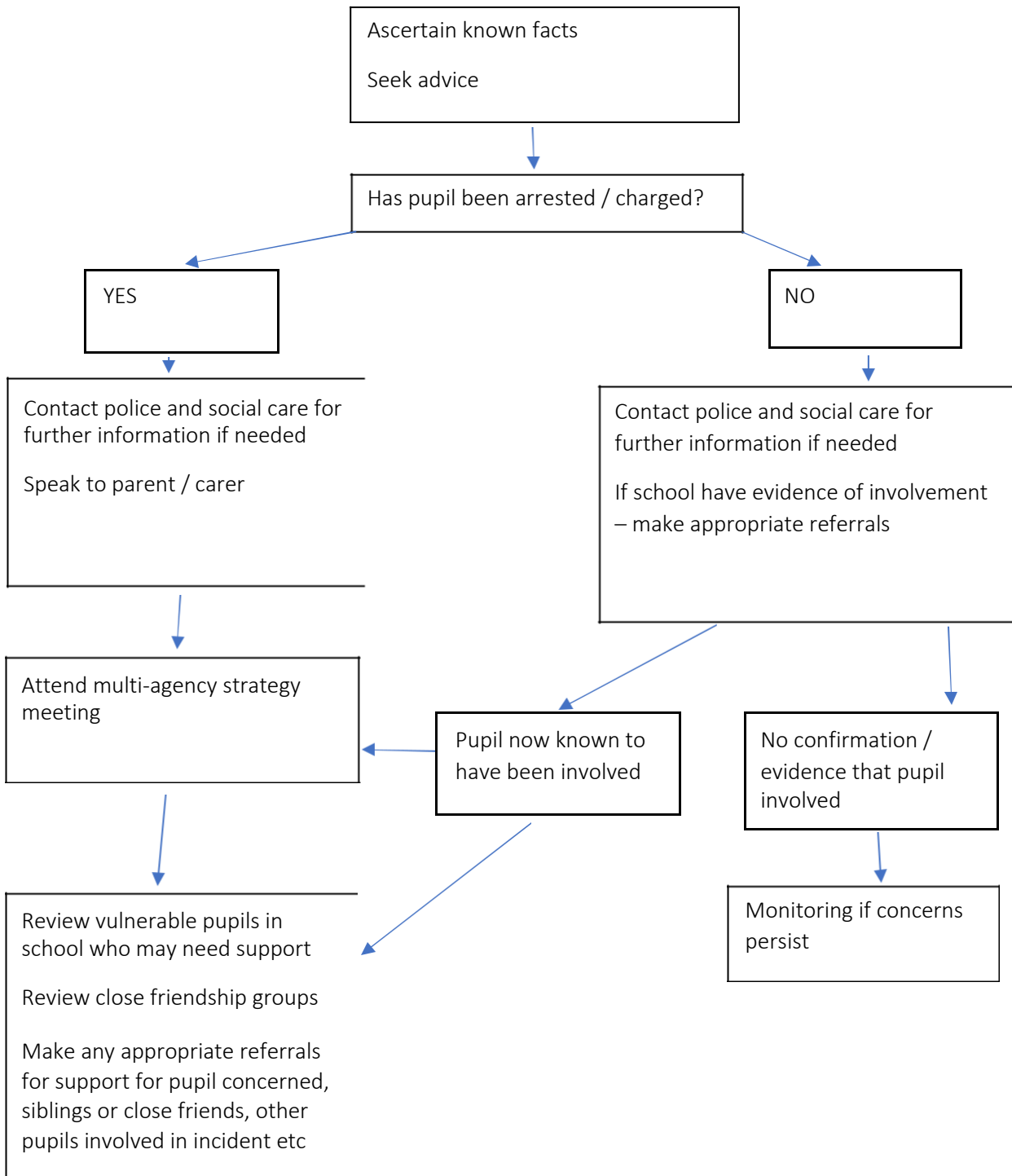


*Please note: if a weapon is being secured it is important that it is not directly touched if possible. Police can supply a kit box with weapons tubes, gloves etc. Locations may also need to be searched in case a weapon has been secreted or ditched. Any pupil suspected of having a weapon should be closely monitored until search can take place.

Flow Chart B - actions police will take once informed of a school related weapon incident



Flow Chart C – pupil is suspected of being the perpetrator of serious youth violence/ arrested for serious offence



Flow Chart D – a pupil (or young person with close ties to a pupil) at the school is victim of serious violence / knife crime

